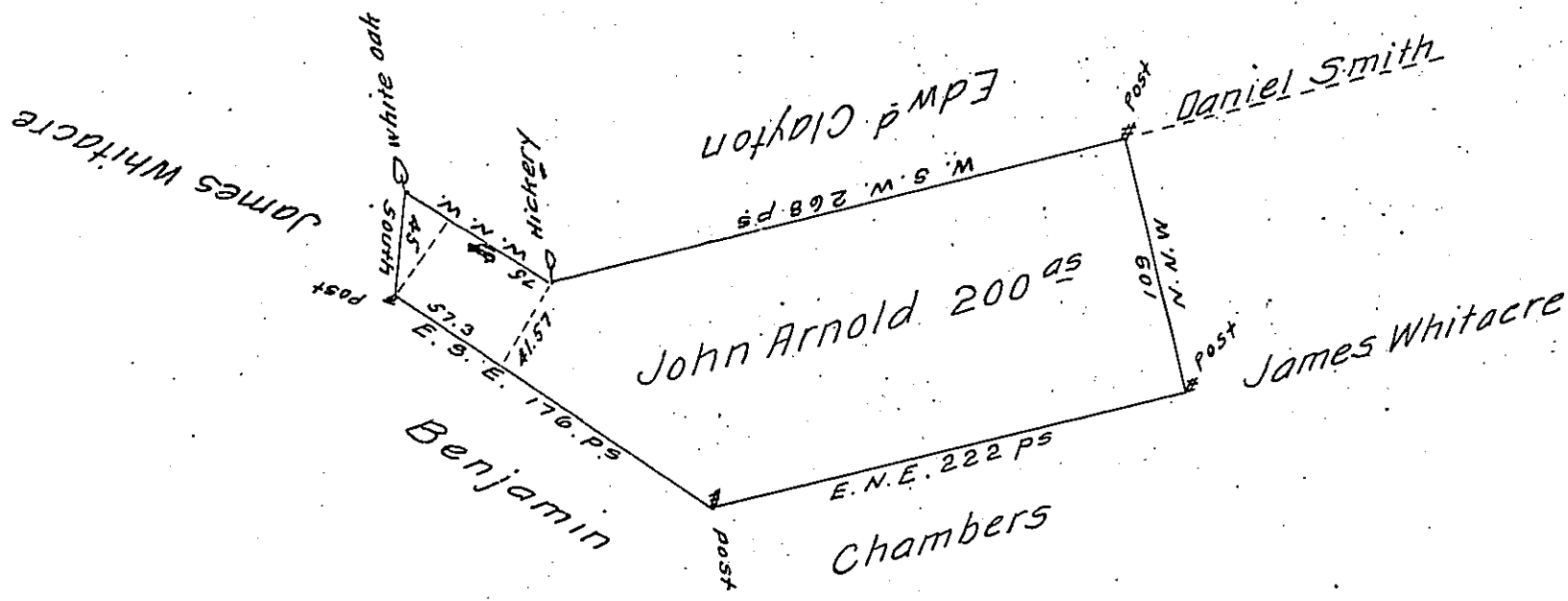


268	
<u>222</u>	
490	
<u>245</u>	
109	
<u>2205</u>	
2450	
<u>26705</u>	106.145
1014	32.97
11	<u>199.82.</u>

32.97

286	109
<u>222</u>	<u>18</u>
508	872
<u>254</u>	<u>109</u>
109	1962
<u>2286</u>	34
2540	<u>12.42</u>
<u>27676</u>	
114	173.6
	<u>232.97</u>
	205.103
	<u>6.21</u>
	199.82



The above described Tract of Land Situate in Bradford in the County of Chester. Containing two Hund^d acres was Laid out to John Arnold the 12th of June 1714 By Warr^t of the 23^d of March 1713/14.

The above Draught is a Copy of ye Survey of 200^{ac} Land Laid out to John Arnold by my father, by Virtue of ye above mentioned Warr^t
 Aug^t 18th 1735.
 Jn^o Taylor.

IN TESTIMONY that the above is a copy of the original remaining on file in the Department of Internal Affairs of Pennsylvania, made conformably to an Act of Assembly approved the 16th day of February, 1833, I have hereunto set my Hand and caused the Seal of said Department to be affixed at Harrisburg, this twelfth day of April 1910.

Henry Houch
 Secretary of Internal Affairs.